



# ***HYDRA SA24IT***



**SMONTAGOMME  
SUPERAUTOMATICO**



**SUPER-AUTOMATIC  
TYRE CHANGER**

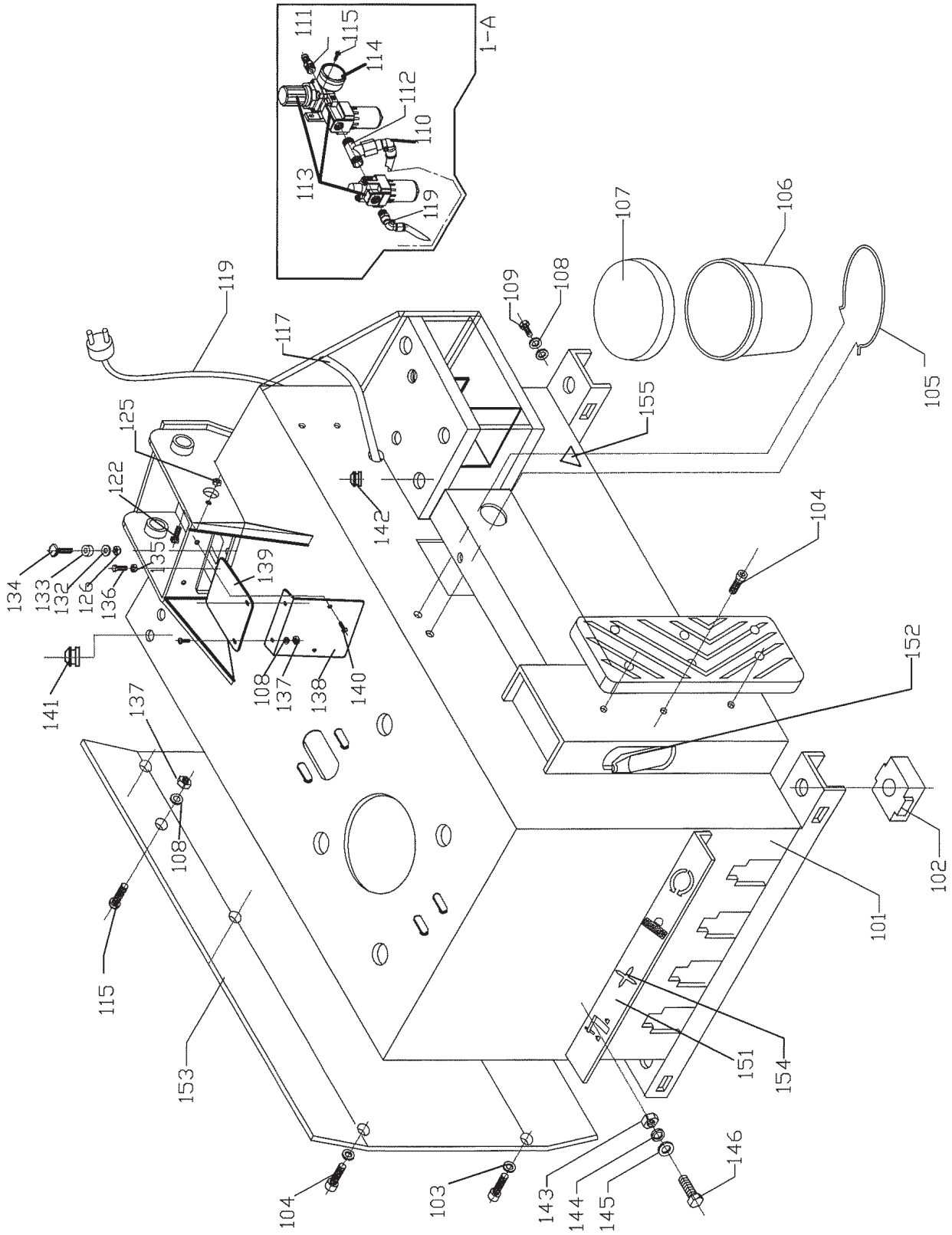
# CASSONE

CHASSIS

RAHMEN

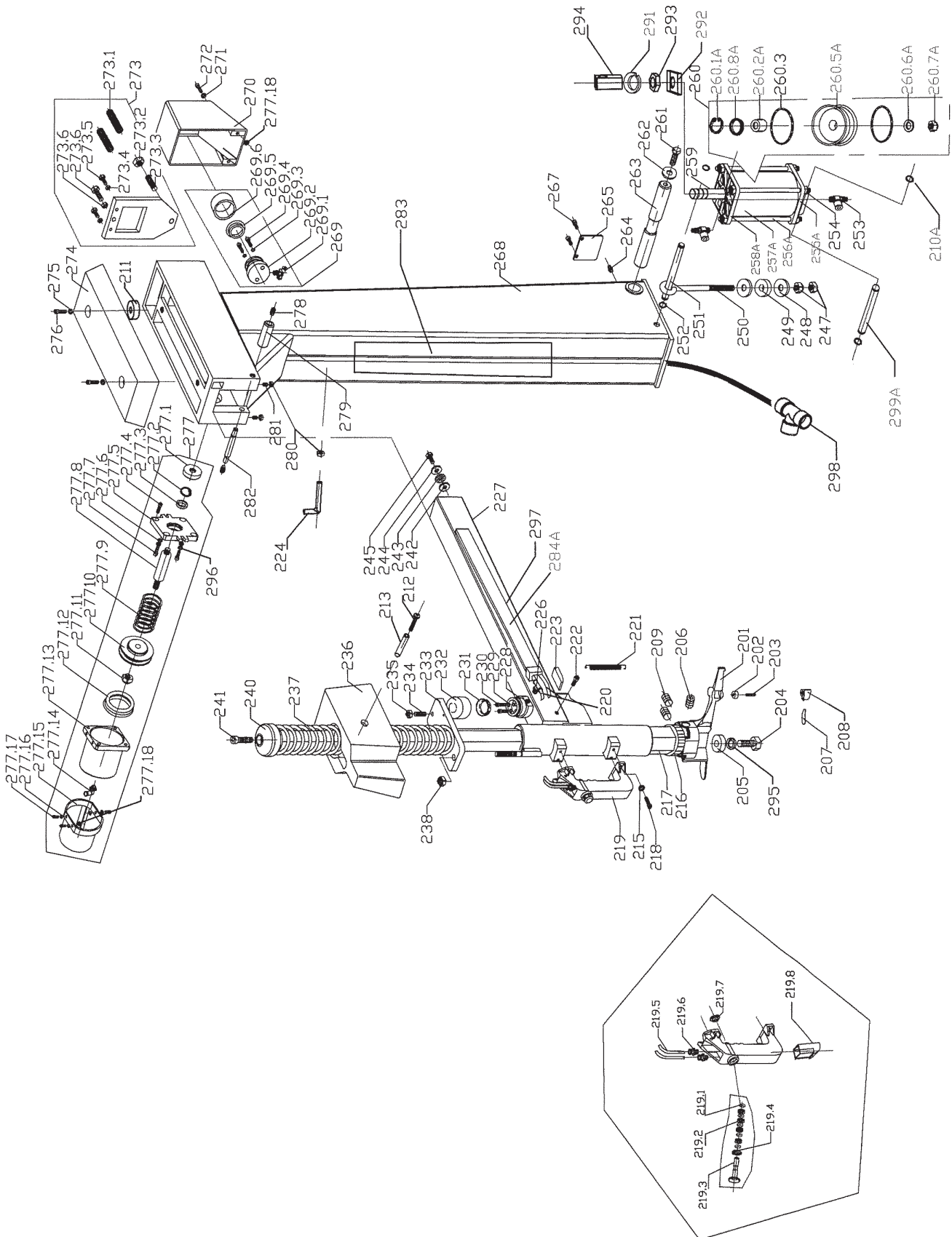
CAISSON

BASTIDOR





COLONNA	
POST	SÄULE
COLONNE	COLUMNNA



NO.	CODE	DESCRIPTION	SPECIFICATION	Q' TY	ORDER NO.	REVISED NO.
201		Dismounting Head	5#	1		
202		Cylinder Roller	13X13	1		
203		Cone Roller Screw	6X24	1		
204		Screw	M10X25 8.8Degree	1		
205		Pressing Washer	∅34X∅11X8	1		
206		Screw	M12X12	2		
207		Protection Cover		1		
208		Protection Cover		1		
209		Screw	M12X16	2		
210A		Location Rob Ring	12	2	0734	45#
211		Rubber Washer	∅26X7X12	2		
212		Screw	M6X40	2		
213		Cover Spacer		2		
214						
215		Flat Washer	4	4		
216		Shock Absorber	S41	1		
217		Hexagon Shaft	650mm	1		
218		Screw	M4X16	4		
219		Handle Valve Assembly		1		
220		PU Hose	∅6X1 Hard Hose	3.8M		
221		Spring		2		
222		Screw	M6X10	2		
223		Position Plate		1		
224						
225						
226		Insert Tee	G1/8"-∅6	1		
227		Horizontal Arm		1		
228		Lock Cylinder Body		1		
229		O-ring	∅10X2	2		
230		Screw	M6X35	2		
231		Y-ring	65X8	1		
232		Lock Cylinder Cover		1		
233		Hexagon Lock Plate	S41	1		
234		Screw	M10X1X25	1		
235		Nut	M10X1	1		
236		Protection Cover		1		
237		Spring	450X∅3X∅49	1		
238		Locknut	M10	1		
239						
240		Knob	M10	1		
241		Screw	M10X30	1		
242		Washer		1		
243		Rubber Washer	25X11X7	1		
244		Washer		1		
245		Screw	M8X20	1		
246						
247		Nut	M10	2		
248		Non-standard Washer	11	2		
249		Rubber Washer	30X15X10	1		
250		Connecting Rod		1		
251		Push-out Shaft	∅16	1		
252		Locating Snap Ring	16#	2		
253		Silencer Valve	G1/4"-∅8	2		
254		Locknut	M8	8		
255A		Cylinder Rear Cover		1	0734	45#
256		Double Rod Screw		4		
257		Cylinder Body		1		
258		Cylinder Front Cover		1		
259		Piston Rod		1		
260		Cylinder Assembly		1		
260. 1A		Locating Snap Ring	30#	1		
260. 2A		Y-Ring	∅30X20X7	1		
260. 3		O-Ring	∅80X3. 1	2		
260. 4A						
260. 5A		Piston		1		
260. 6A		Flat Washer	12	1		

NO.	CODE	DESCRIPTION	SPECIFICATION	Q' TY	ORDER NO.	REVISED NO.
260.7A		Locknut	M12	1		
260.8A		Wearable Bushing	ø20Xø23X20	1		
260.9A						
261		Screw	M10X25	2		
262		Washer		2		
263		Hole Rotating Shaft		1		
264		Oil Cup	M6	1		
265		Staling Plate		1		
267		Screw	M6X10	2		
268		Vertical Arm		1		
269		Lock Cylinder Assembly		1		
269.1		Insert Tee	G1/8"-ø6	1		
269.2		Lock Cylinder Body		1		
269.3		O-ring	ø10X2	2		
269.4		Screw	M6X35	2		
269.5		Y-ring	65X8	1		
269.6		Lock Cylinder Cover		1		
270		T-Cover		1		
271		Flat Washer	6	2		
272		Screw	M6X16	2		
273		Lock Plate Assembly		1		
273.1		Pressing Spring	2.0X14.5X13	2		
273.2		Nut	M10X1	1		
273.3		Screw	M10X1X25	1		
273.4		Nut	M6	2		
273.5		Screw	M6X30 8.8Degree	2		
273.6		Screw	M8X35 8.8Degree	1		
273.7		Nut	M8	1		
274		Upper Cover		1		
275		Flat Washer	6	2		
276		Screw	M6X20	2		
277		Cylinder Assembly		1		
277.1		Washer		1		
277.2		Locating Snap Ring	28#	1		
277.3		Ring	ø27Xø20X6	1		
277.4		Screw	M6X16	2		
277.5		Cylinder Cover		1		
277.6		Flat washer	6	2		
277.7		Screw	M6X25	2		
277.8		Piston Rod		1		
277.9		Pressing Spring		1		
277.10		Piston		1		
277.11		Locknut	M10	1		
277.12		Y-ring	ø65X8	1		
277.13		Cylinder Body		1		
277.14		Insert Elbow	G1/8-ø8	1		
277.15		Protection Cover		1		
277.16		Flat Washer	5	3		
277.17		Screw	M5X16	3		
277.17		Rubber Washer		3		
278		Screw	M12X12	2		
279		Rotating Spacer		1		
280		Nut	M8	2		
281		Screw	M8X20	2		
282		Support Shaft		1		
283		Vertical Arm Sticker				
284A		Slide Pipe Guide		1		98#
285						
286						
287						
287.1						
287.2						
287.3						
287.4						
288						
288.1						
288.2						





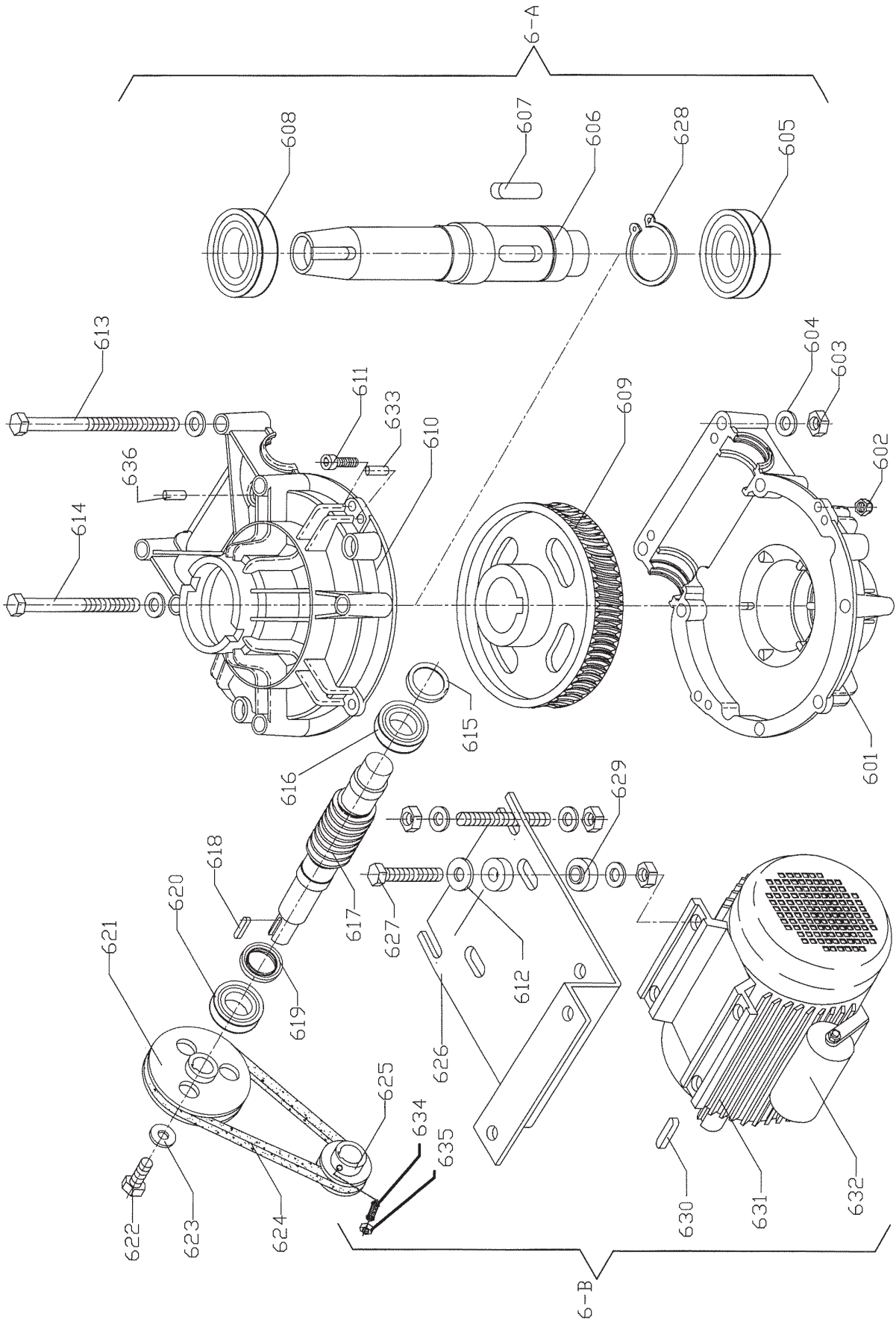
MOTORE/RIDUTTORE

MOTOR/GEAR BOX

ELEKTRO-MOTOR/UNTERSETZER

MOTEUR ÉLECTRIQUE/REDUCTEUR

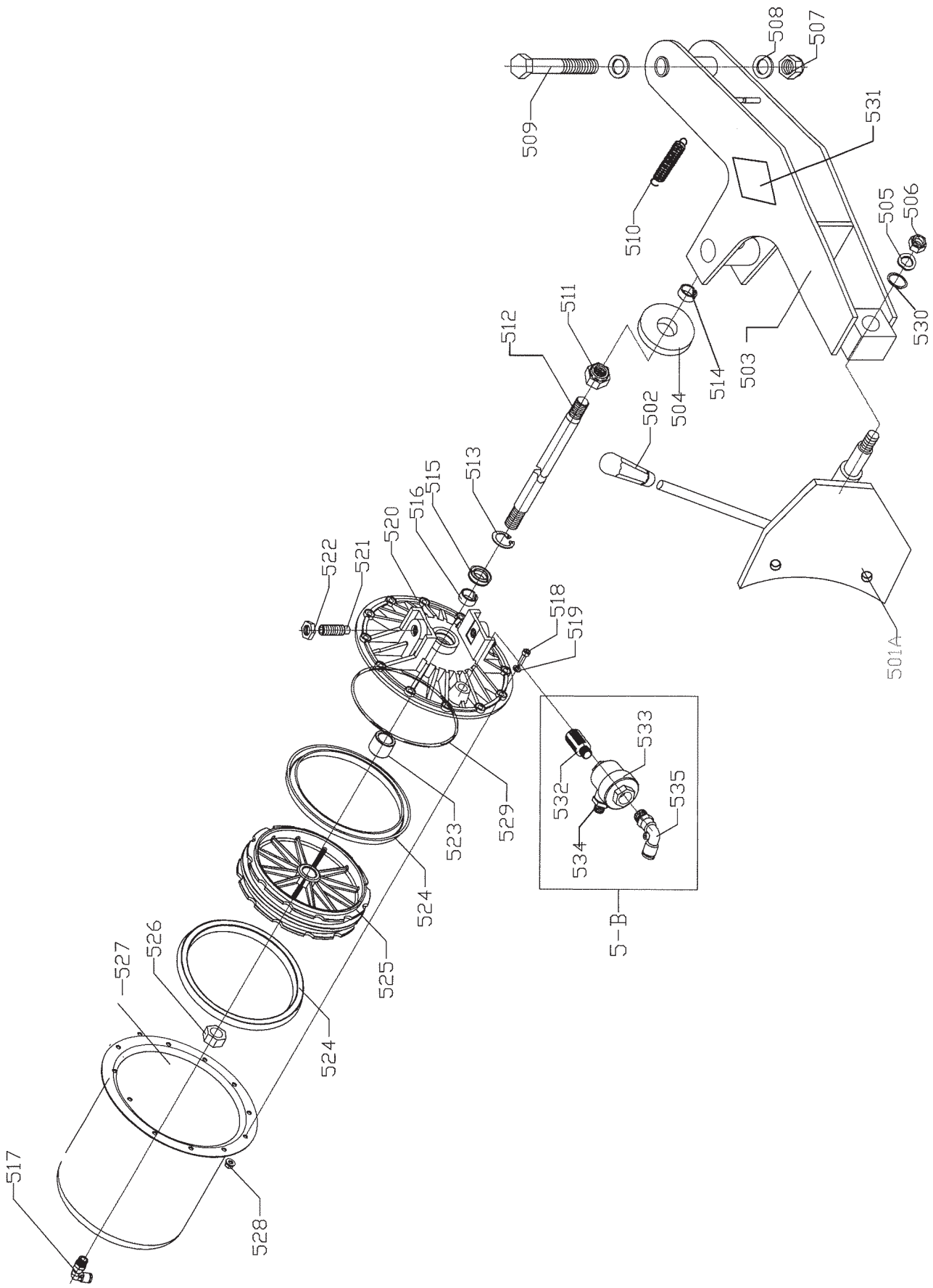
MOTOR ELÉCTRICO/REDUCTOR







<b>STALLONATORE</b>	
<b>BEAD-BREAKER</b>	<b>REIFENABDRÜCKER</b>
<b>DÉTALONNEUR</b>	<b>DESTALONADOR</b>

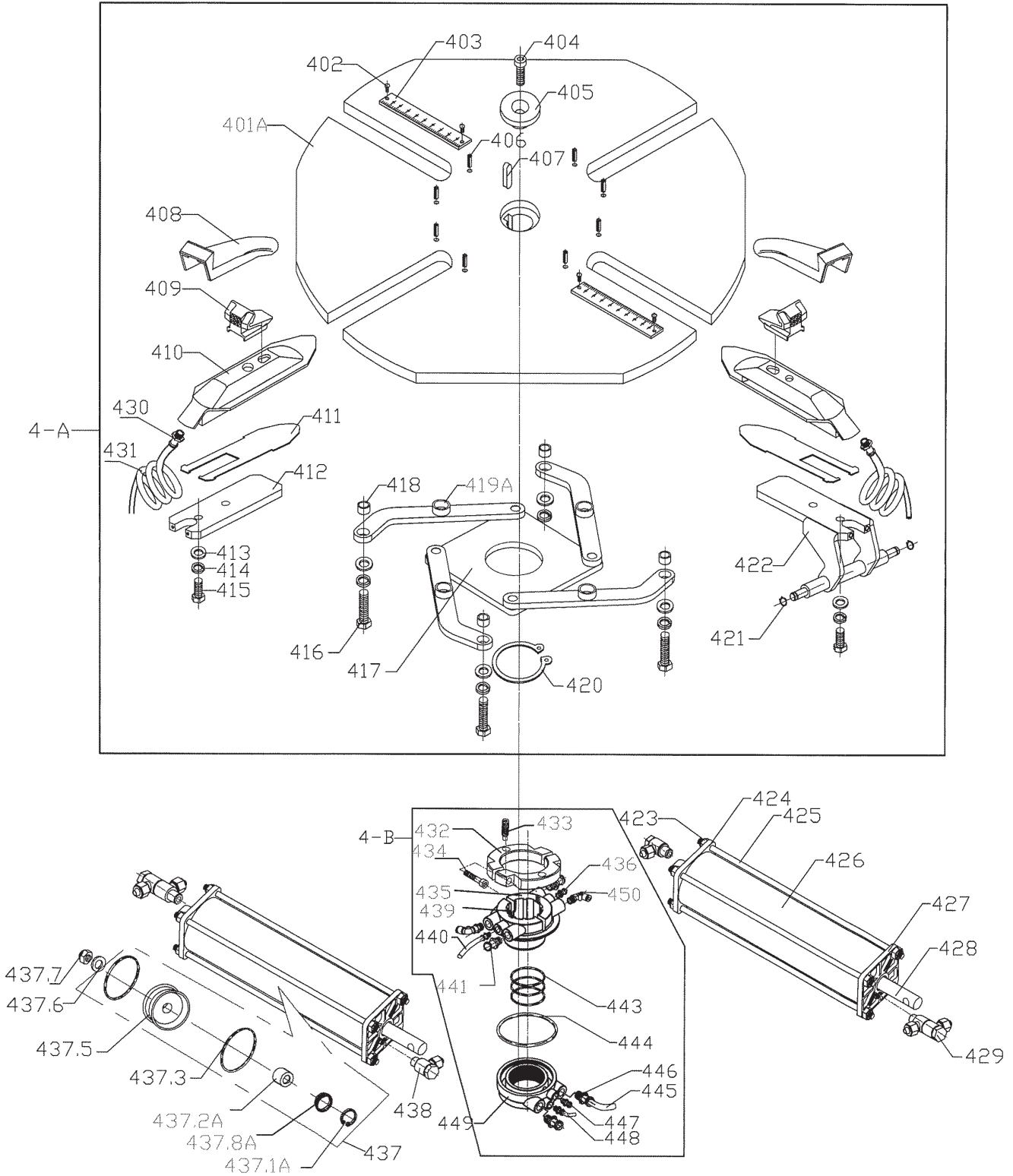


NO.	CODE	DESCRIPTION	SPECIFICATION	Q' TY	ORDER NO.	REVISED NO.
501A		Bead breaker shoe		1	3782#	96#
502		Handle cover		1		
503		Bead breaker		1		
504		Rubber Washer	Ø 80X20X10	1		
505		Ripple Washer	14	1		
506		Locknut	M14	1		
507		Locknut	M16	1		
508		Flat washer	16	2		
509		Screw	M16X100	1		
510		Spring	Ø 13XØ 2.5X90	1		
511		Locknut	M18X1.5	1		
512		Piston Rod	385mm	1		
513		Locating Snap Ring	30#	1		
514		Slide Spacer		1		
515		Y-Ring	Ø 30XØ 20X7	1		
516		Wearable Bushing	50X10X2.1	1		
517		Insert Elbow	G1/8"-Ø 8	1		
518		Screw	M6X20	12		
519		Flat Washer	6	12		
520		Cylinder Cover		1		
521		Screw	M14X42	2		
522		Nut	M14-S19	2		
523		Position Spacer		1		
524		Blow	Ø 186X12X9	2		
525		Piston		1		
526		Nut	M18X1.5	1		
527		Cylinder Body		1		
528		Ripple Nut	M6	12		
529		O-Ring	Ø 185X5.7	1		
530		Non-standard Washer	37X13X2.5	1		
531		Bead Breaker Sticker		1		
532		Silencer	G1/4"	1		
533		Quick Inflation Valve		1		
534		Valve Tie-in	G1/4"-1/8"	1		
535		Insert Elbow	G1/4"-Ø 8	1		
536						
537						
538						
539						
540						
541						
542						
543						
544						
545						
546						
547						
548						
549						
550						
551						
552						
553						
554						
555						
556						
557						
558						
559						
560						
561						
562						
563						
564						

# TAVOLA AUTOCENTRANTE

**TURNTABLE**  
**TABLE AUTOCENTREUSE**

**AUFSPANNTISCH**  
**TABLA AUTOCENTRADORA**



NO.	CODE	DESCRIPTION	SPECIFICATION	Q' TY	ORDER NO.	REVISED NO.
401A		Turntable		1	3349#	86#
402		Aluminum Rivet	3X8	4		
403		Scale		2		
404		Screw	12X30	1		
405		Turntable cap		1		
406		Pin	∅4X16	4		
407		Disk key	10X45	1		
408		Clamp Cover		4		
409		Clamp	4#	4		
410		Slide Cover		4		
411		Wearable Washer		4		
412		Slide plate		2		
413		Flat washer	12	12		
414		Elastic washer	12	8		
415		Screw	M12X35	4		
416		Screw	M12X83	4		
417		Square Turntable		1		
418		Washer		4		
419A		Connecting plate		4		87#
420		Locating Snap Ring	65#	1		
421		Locating Snap Ring	12#	4		
422		Cylinder bracket		2		
423		Locknut	M8	16		
424		Rear housing for cylinder		2		
425		Double Rod Screw	M8	8		
426		Cylinder body	∅80	2		
427		Front housing for cylinder		2		
428		Piston Rod		2		
429		Union	∅6	2		
430		Insert Fixture	G1/8" ∅10	4		
431		Spiral Pipe	∅10	some		
432		Block Ring		1		
433		Fixture Screw		2		
434		Screw	M6X35	2		
435		Air Guide Cover	Plastic Part	1		
436		Insert Fixture	G1/8" ∅6	2		
437		Cylinder Assembly		2		
437. 1A		Locating Snap Ring	30#	2		
437. 2A		Guide Spacer		2		
437. 3		O-Ring	∅80X3.1	4		
437. 4A						
437. 5		Piston		1		
437. 6		Flat Washer	10	2		
437. 7		Locknut	M10	2		
437. 8A		Y-Ring	∅30X20X7	2		
437. 9						
438		Union	∅6	2		
439		Screw	M3X6	4		
4-A		Turntable Assembly		1		
4-B		Air Guide Assembly		1		
440		PU Hose	∅6X4	some		
441		Insert Fixture	G1/4" ∅10	2		
442		Screw		2		
443		O-Ring	∅60X2.65	3		
444		O-Ring	∅90X2.65	1		
445		PU Hose	∅12	some		
446		Insert Fixture	G3/8" ∅12	2		
447		Insert Fixture	G1/8" ∅6	2		
448		PU Hose	∅6X4	some		
449		Air Guide Cover	Protection Part	1		
450		Insert Elbow	G1/4" ∅10	2		

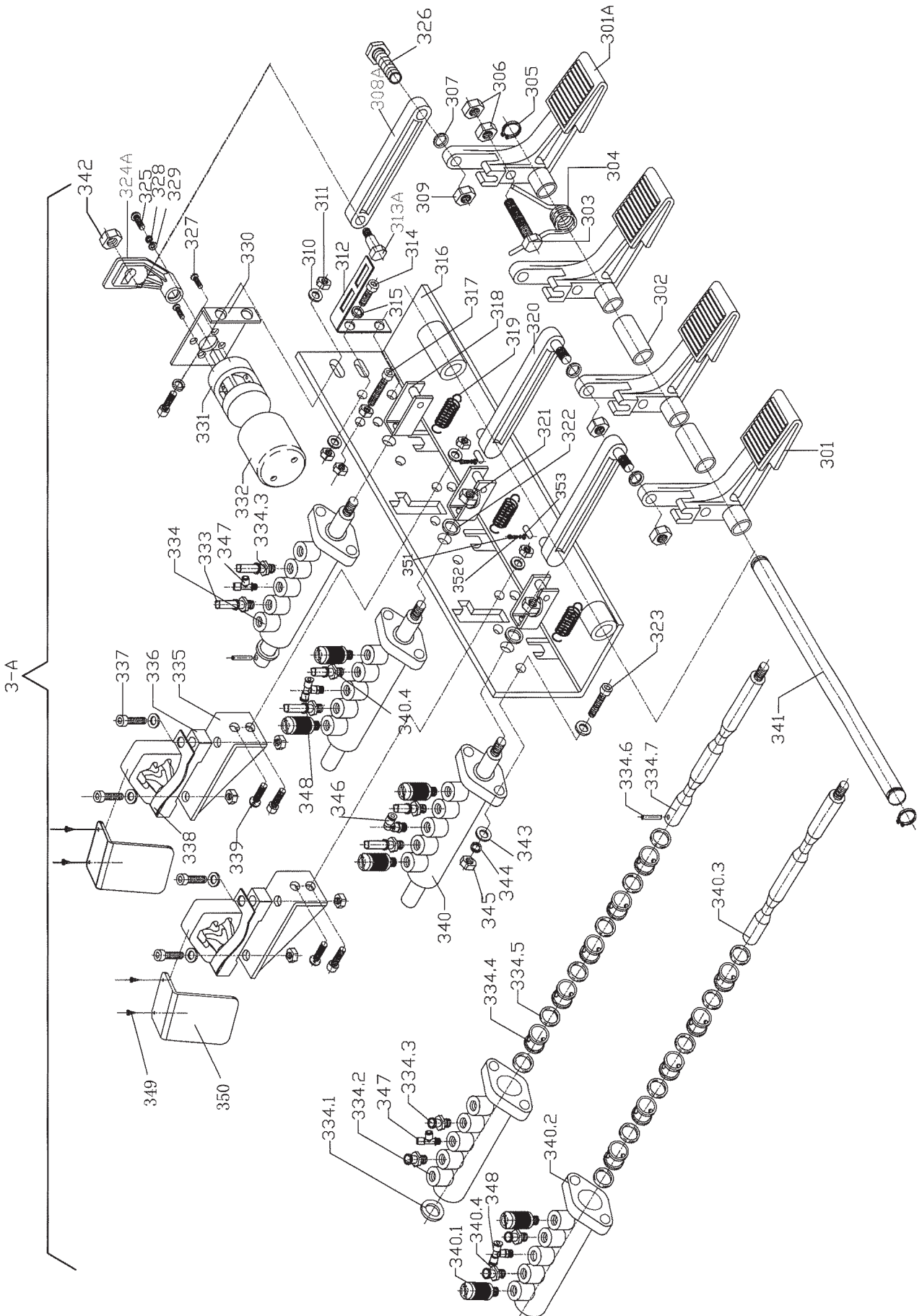
PEDALIERA

PEDALS-PLATE

PEDAL

PÉDALIER

PEDALERA





NO.	CODE	DESCRIPTION	SPECIFICATION	Q' TY	ORDER NO.	REVISED NO.
301		Pedal		3	5594#	142#
301A		Pedal		1	5594#	143#
302		Pedal Spacer		2		
303		Screw	M8X55	1		
304		Torsion Spring		1		
305		Locating Snap Ring	14#	2		
306		Nut	M8	2		
307		Spacer		3		
308A		Switch connecting rod		1	3349#	89#
309		Locknut	M8	3		
310		Flat washer	6	8		
311		Nut	M6	14		
312		Spring bracket		1		
313A		Switch Connecting Rod		1	3349#	89#
314		Screw	M6X16	6		
315		Elastic washer	6	11		
316		Pedal bracket		1		
317		Screw	M6X30	1		
318		Bracket		3		
319		Spring		3		
320		Connecting rod		2		
321		Locknut	M8	3		
322		Spacer		2		
323		Screw	M5X25	6		
324A		Reverse lever	□ 8 (small)	1	3349#	89#
325		Screw	4X10	1		
326		Screw	M8X40	1		
327		Screw	M5X16	4		
328		Elastic washer	4	1		
329		Flat washer	4	1		
330		Switch bracket		1		
331		Reverse switch	40A	1		
332		Rubber Switch Cover		1		
333		PU hose	∅ 8X5	some		
334		Valve assemble		1		
334.1		Flat washer	10	1		
334.2		Valve Body		1		
334.3		Insert Fixture	G1/8"-∅ 8	4		
334.4		Spacer		15		
334.5		O-ring	∅ 17X4	18		
334.6		Pin	∅ 4X20	1		
334.7		Valve Pin		1		
335		Cam bracket		2		
336		Cam		2		
337		Screw	M6X25	4		
338		Fork plate spring		2		
339		Screw	M6X16	2		
340		Valve assemble		2		
340.1		Silencer	G1/8"	6		
340.2		Valve body		2		
340.3		Valve pin		2		
340.4		Insert Fixture	G1/8"-∅ 8	2		
341		Bottom Shaft		1		
3-A		Pedal Assembly		1		
342A		Locknut	M8	1	3349#	89#
343		Flat washer	∅ 5	12		
344		Elastic washer	∅ 5	6		
345		Nut	M5	6		
346		Insert Elbow	∅ 8 1/8	1		
347		Insert Tee	∅ 8 1/8	1		
348		Insert Tee	∅ 8 1/8	1		
349		Self-dapting Screw	M3X10	4		
350		Cam Block Plate		2		
351		Screw	M10X25	2		
352		Elastic washer	∅ 10	2		
353		Flat washer	∅ 10	2		

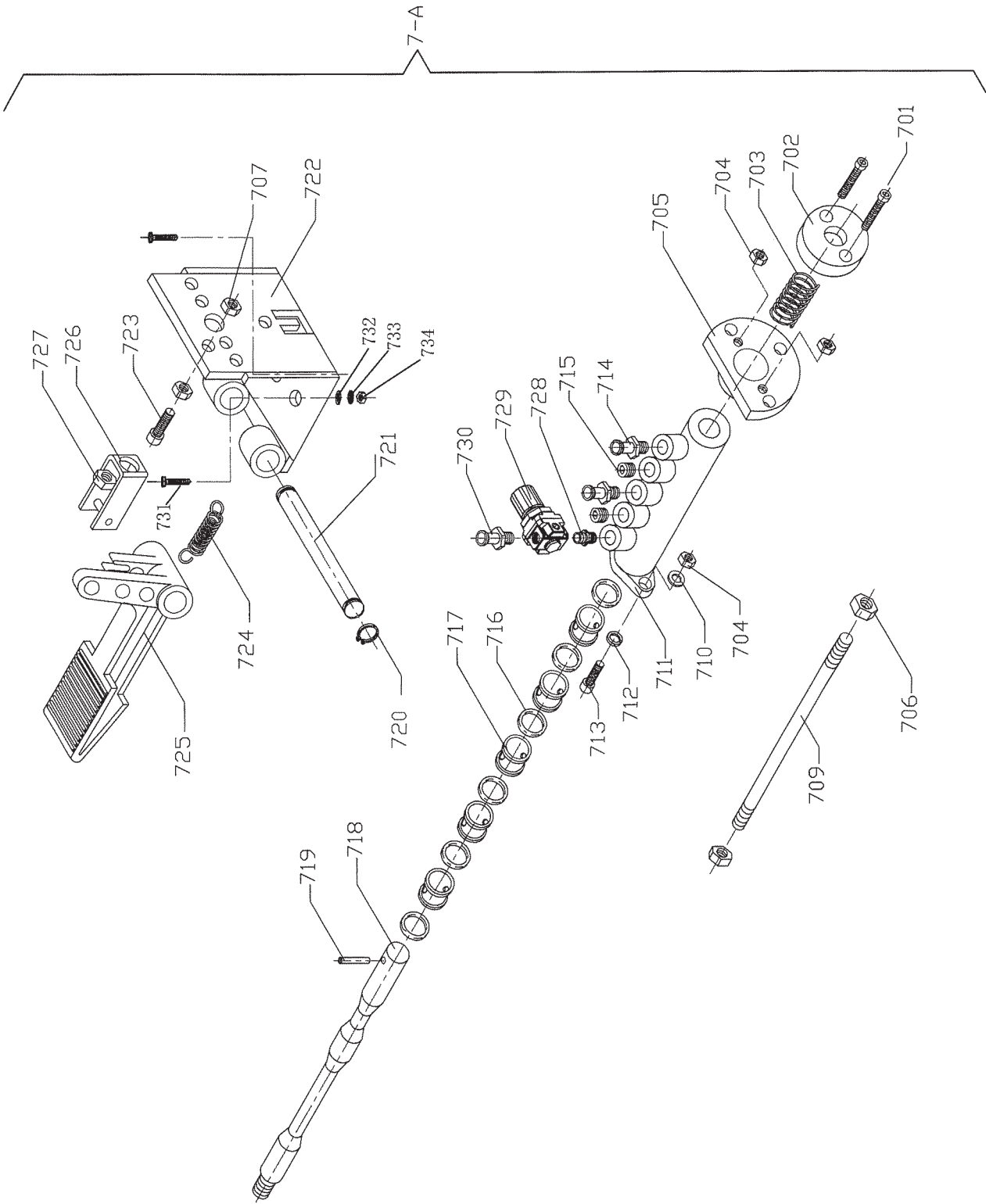
EDALIERA

PEDALS-PLATE

PEDAL

PÉDALIER

PEDALERA





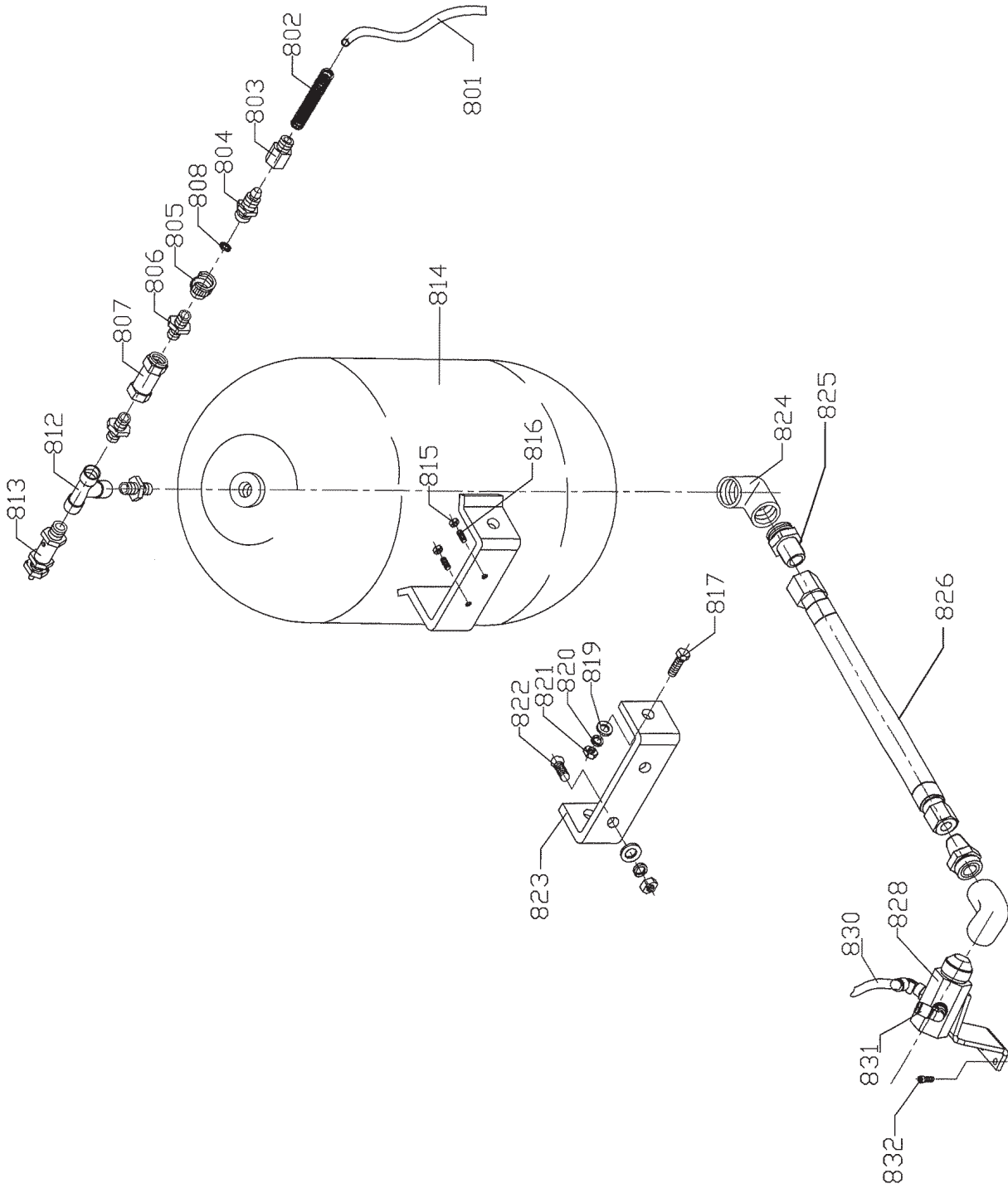
# INFLATOR

INFLATOR

INFLATOR

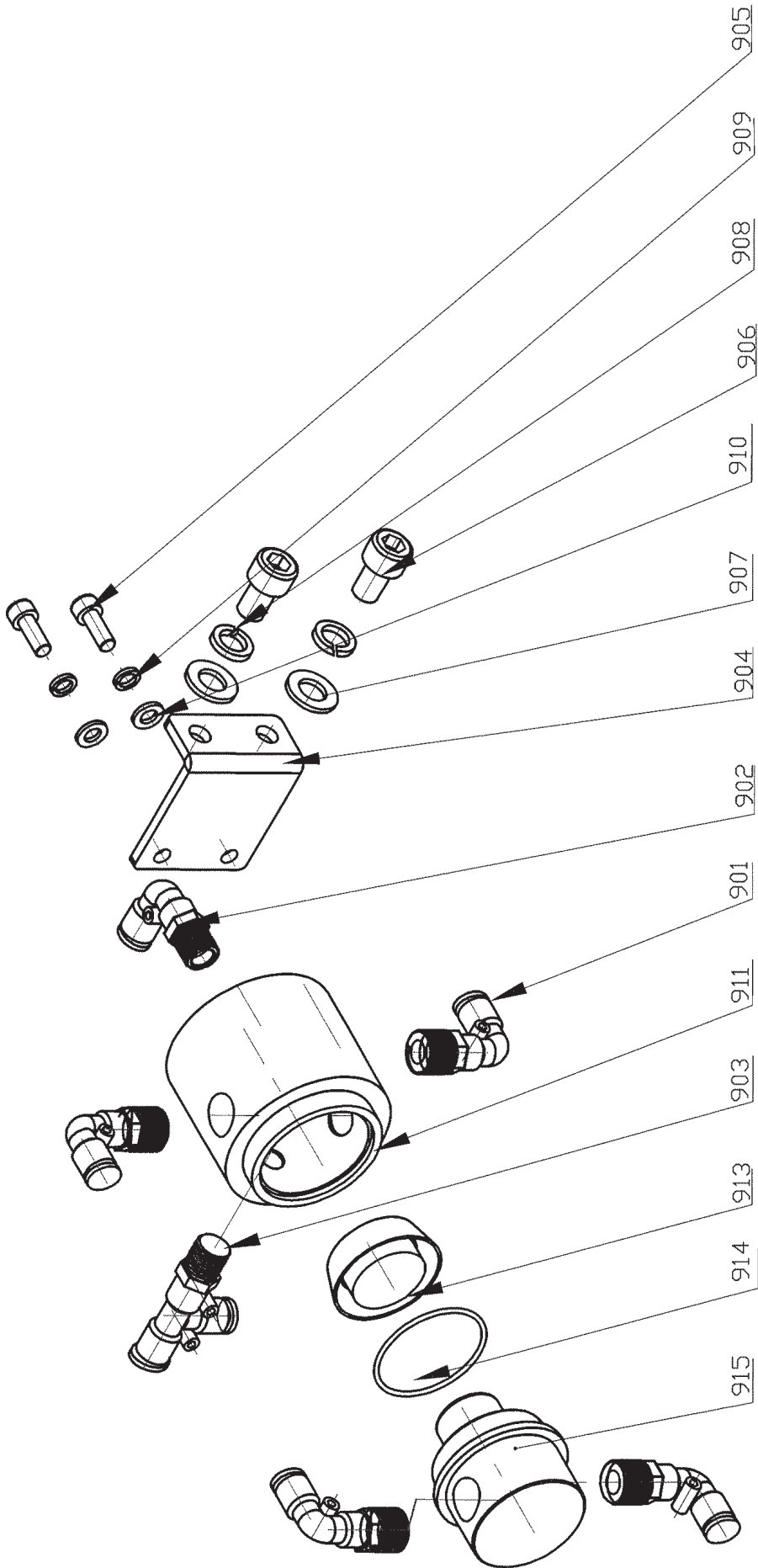
INFLATOR

INFLADOR





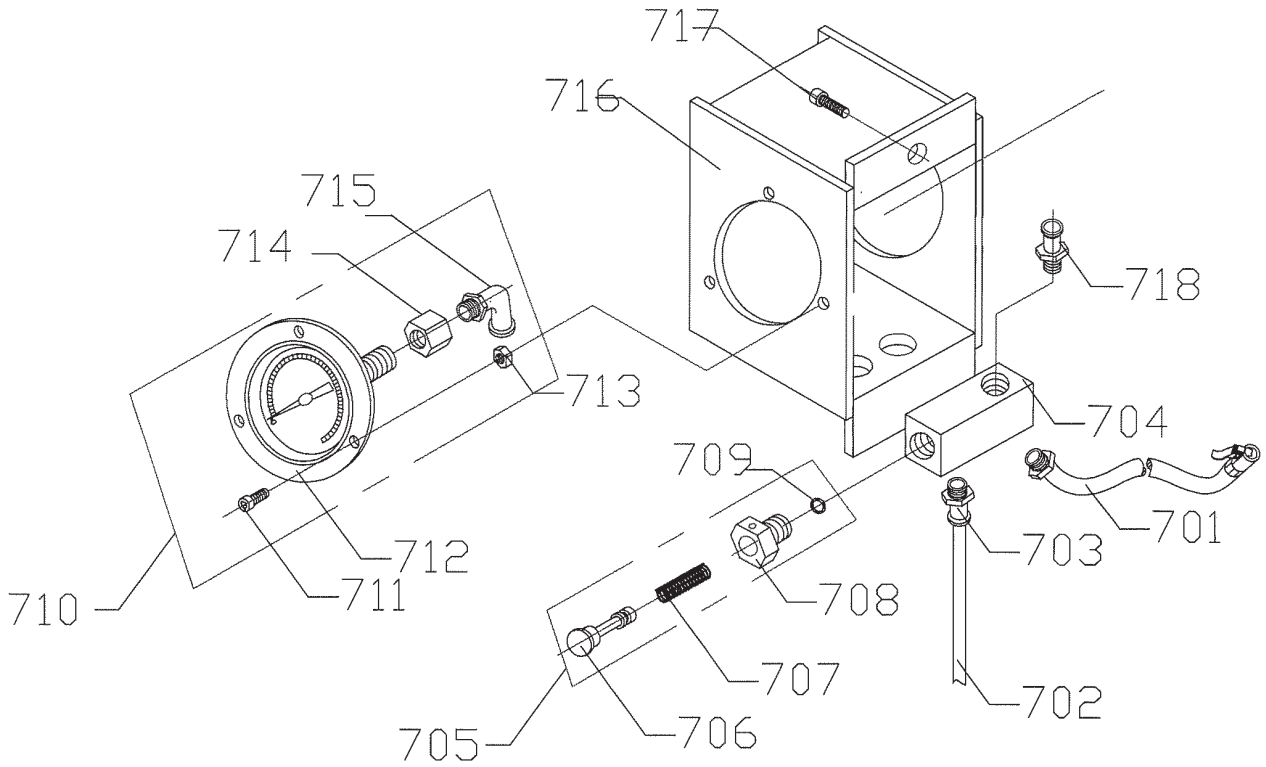
<b>INFLATOR</b>	
<b>INFLATOR</b>	<b>INFLATOR</b>
<b>INFLATOR</b>	<b>INFLATOR</b>







GONFIAGGIO	
INFLATING	AUFBLASEN
GONFLAGE	INFLADO



NO.	DESCRIPTION	SPE	Q' TY	REMARK	NO.	DESCRIPTION	SPE	Q' TY	REMARK
701	Inflation Hose	G1/4"-ø8	1		711	Screw	M4X12	3	
702	PU Hose	ø8X5	some		712	Pressure guage	0.1-1.0Mpa M14X1.5	1	
703	Insert Fixture	G1/4"-ø8	1		713	Nut	M4	3	
704	Valve		1		714	In-Buckle Tie-in		1	
705	Valve Assembly		1		715	Insert Elbow	G1/8"- ø8	1	
706	Defalte Valve Core		1		716	Gauge cover		1	
707	Spring	ø7.5X ø0.8X16	1		717	Screw	M6X10	2	
708	Valve body		1		718	Insert Fixture	G1/8"- ø8	1	
709	O-ring	ø7X1.9	1						
710	Pressure Gauge Assembly		1						



**Dichiarazione di conformità - Declaration of Conformity  
Konformitätserklärung - Déclaration de conformité  
Declaración de conformidad - Overensstemmelseserklæring  
Samsverserklæring - Överensstämmande intyg  
EG-Conformiteitsverklaring**



**WERTHER INTERNATIONAL S.p.A.**  
*Via F.Brunelleschi, 12 42040 CADE' (Reggio Emilia) Italy*  
Tel.++/+522/9431 (r.a.) Fax ++/+522/941997

*con la presente dichiariamo che lo smontagomme modello  
déclare par la presente que le monte-demonte pneus modèle  
hereby we declare that the tyre changer model  
hiermit erklären wir, daß die Reifemontirgerät  
por la presente declara, que l'elevador modelo*

## HYDRA SA24IT



è stato costruito in conformità alle normative 73/23 CEE - 89/336 CEE e 98/37/CE



a été construite en conformité avec les normes 73/23 CEE - 89/336 CEE et 98/37/CE



was manufactured in conformity with the normes 73/23 CEE - 89/336 CEE and 98/37/CE



in Übereinstimmung mit den Richtlinien 73/23 CEE - 89/336 CEE und 98/37/CE



ha sido fabricado según las disposiciones 73/23 CEE - 89/336 CEE y 98/37/CE



ble produsert i samsvar med direktivene 73/23/ EEC,89/336 EEC 98/37/ EEC).